

Course Goals

The Big Picture

There's a Lot We Don't Perceive

Science teaches us that there's much more “out there” than what our senses perceive.

Technology Can Help Us to Perceive More

One can - and, in this course, we will - encode “invisible” information into forms that we *can* perceive.

It is possible to do very interesting things with relatively simple programming and electronics, and you will do some.

It's Good to Perceive More

You can enrich your experience of the world.

You can convey, and take in, more information.

You can develop new tools for solving problems.

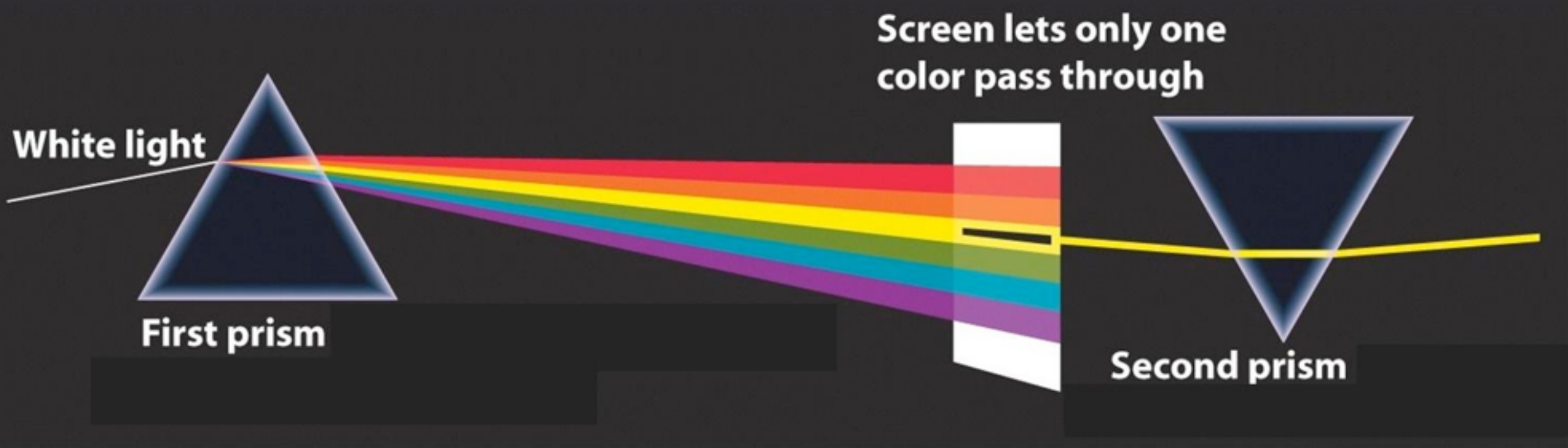
We will get you started.

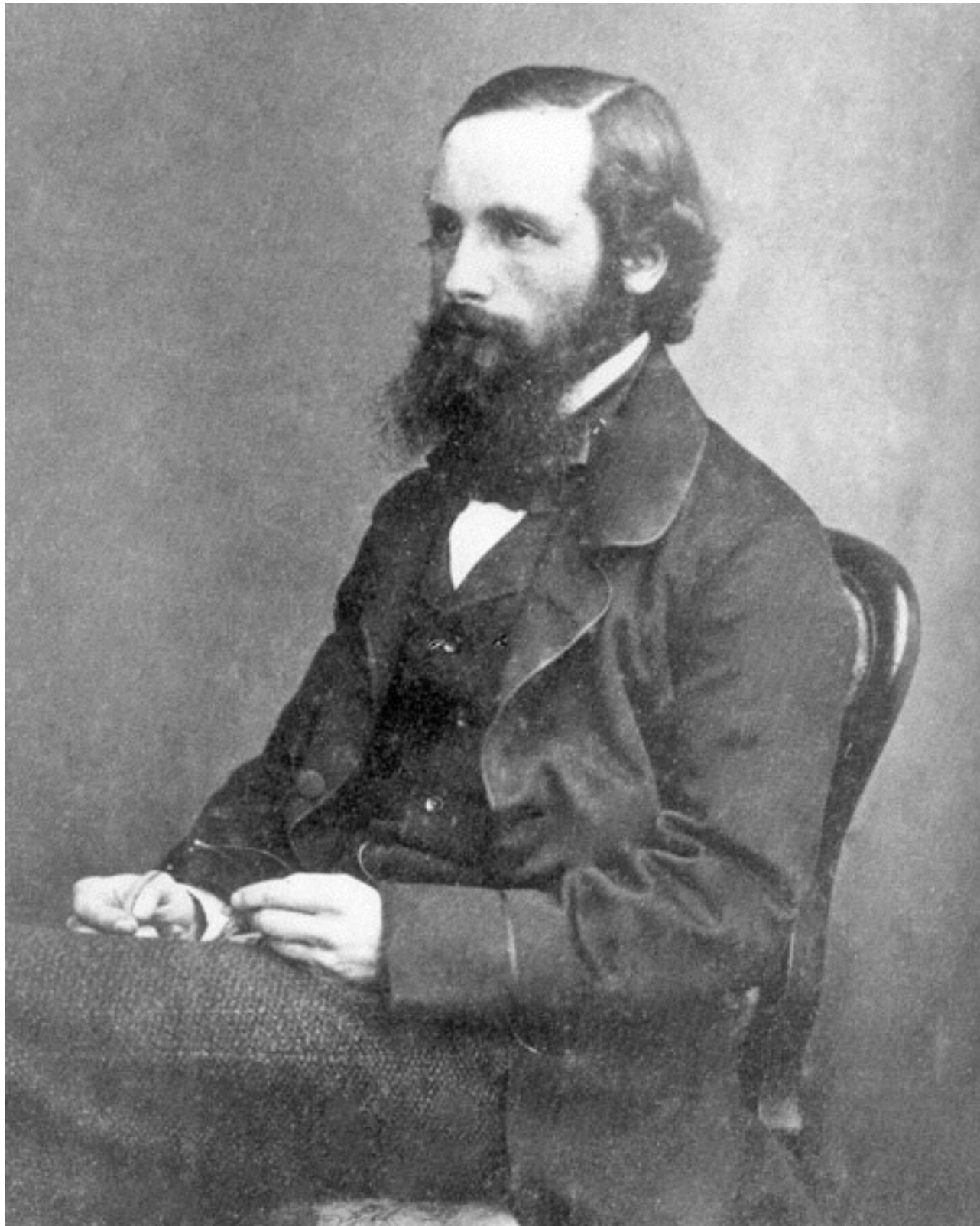
Color: Physical and Perceptual

Dimensions and Channels

What is Color? What is Light?

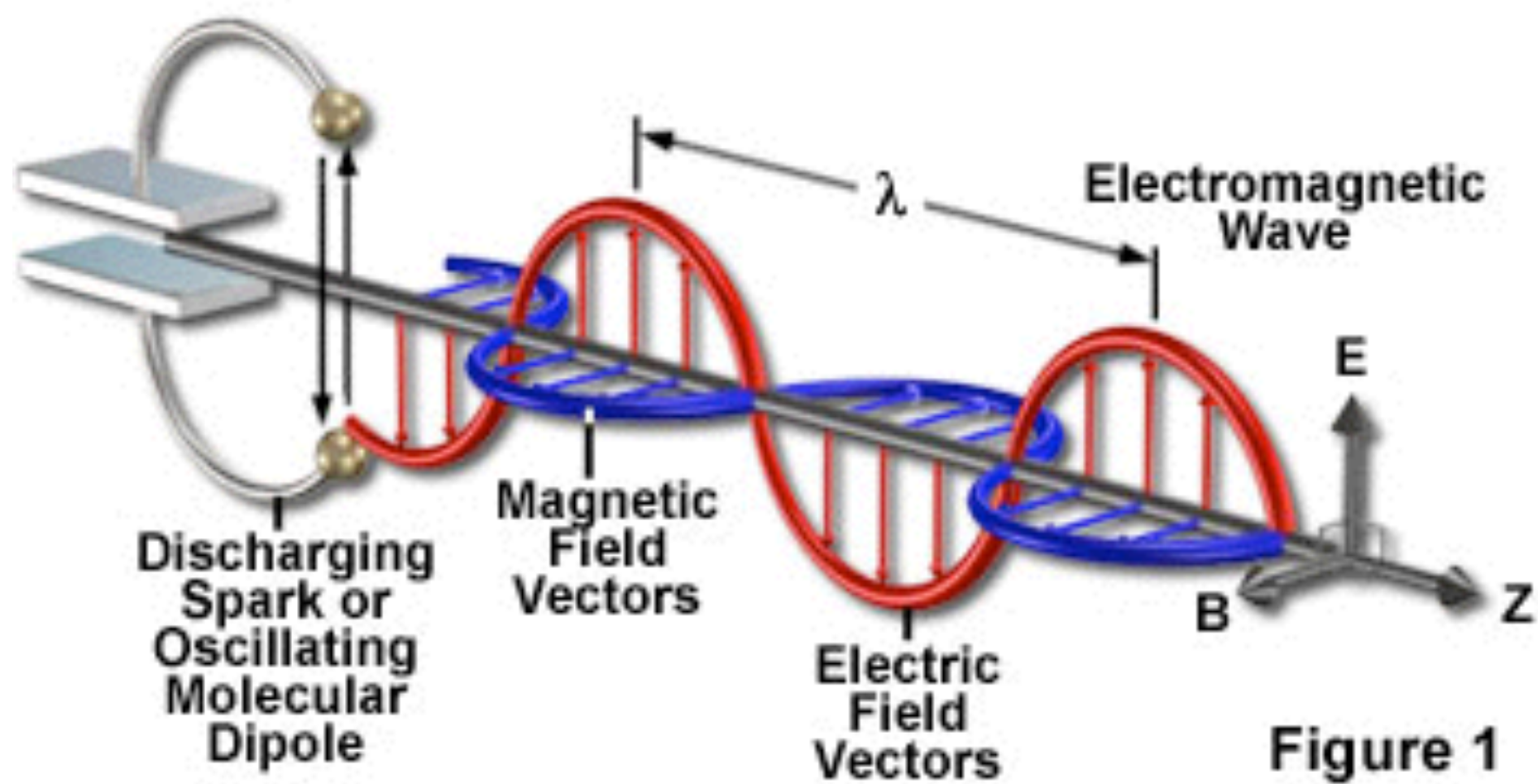
Physical Aspects

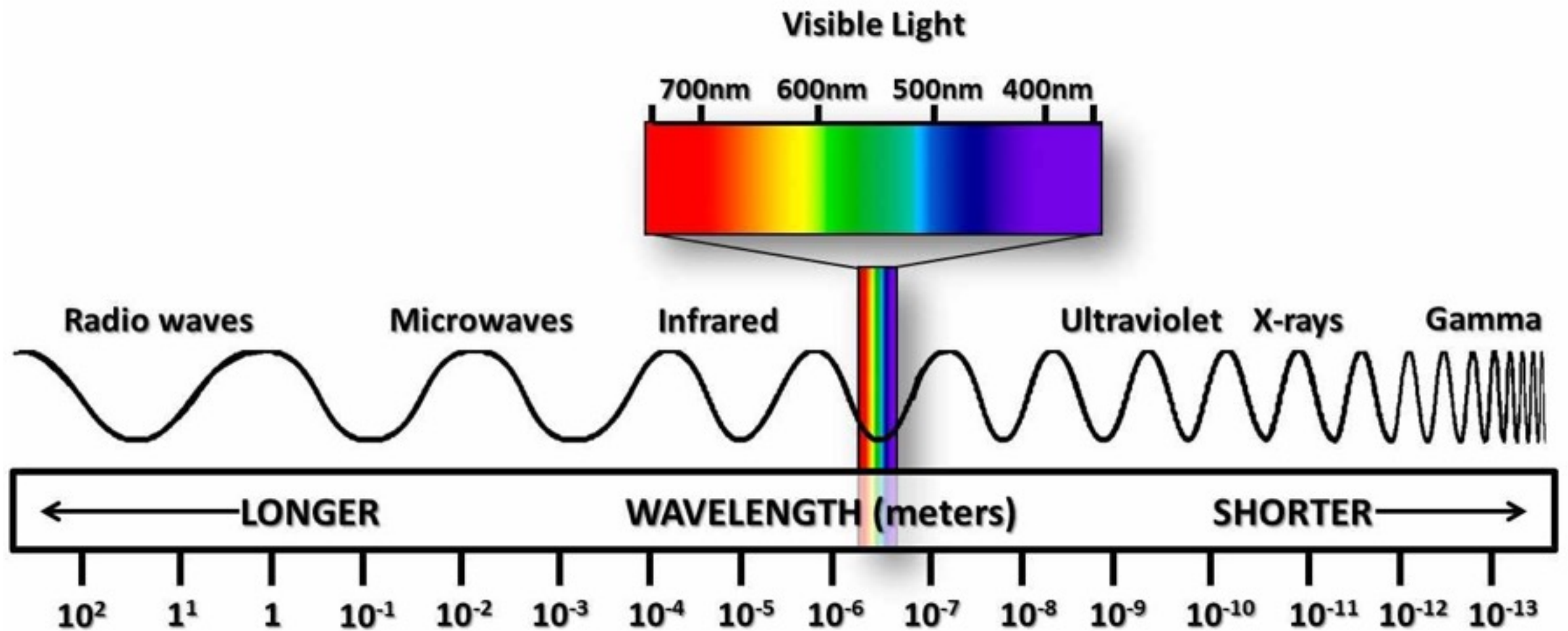




“We can scarcely avoid the inference that light consists in the transverse undulations of the same medium which is the cause of electric and magnetic phenomena.”

Propagation of an Electromagnetic Wave





The infographic is a comprehensive chart of the electromagnetic spectrum, organized into several color-coded bands: Gamma Rays, X-Rays, Visible Light, Infrared, Microwave, Radio Waves, and Ultra Low Frequency. Each band is further divided into sub-bands with specific frequency, wavelength, and energy values. The chart also includes icons for various types of radiation and their effects on humans, such as Gamma Rays (nuclear symbol), X-Rays (X-ray machine), Visible Light (sun), Infrared (heat), Microwave (microwave oven), and Radio Waves (radio tower). The chart is a valuable resource for understanding the properties and effects of electromagnetic radiation.

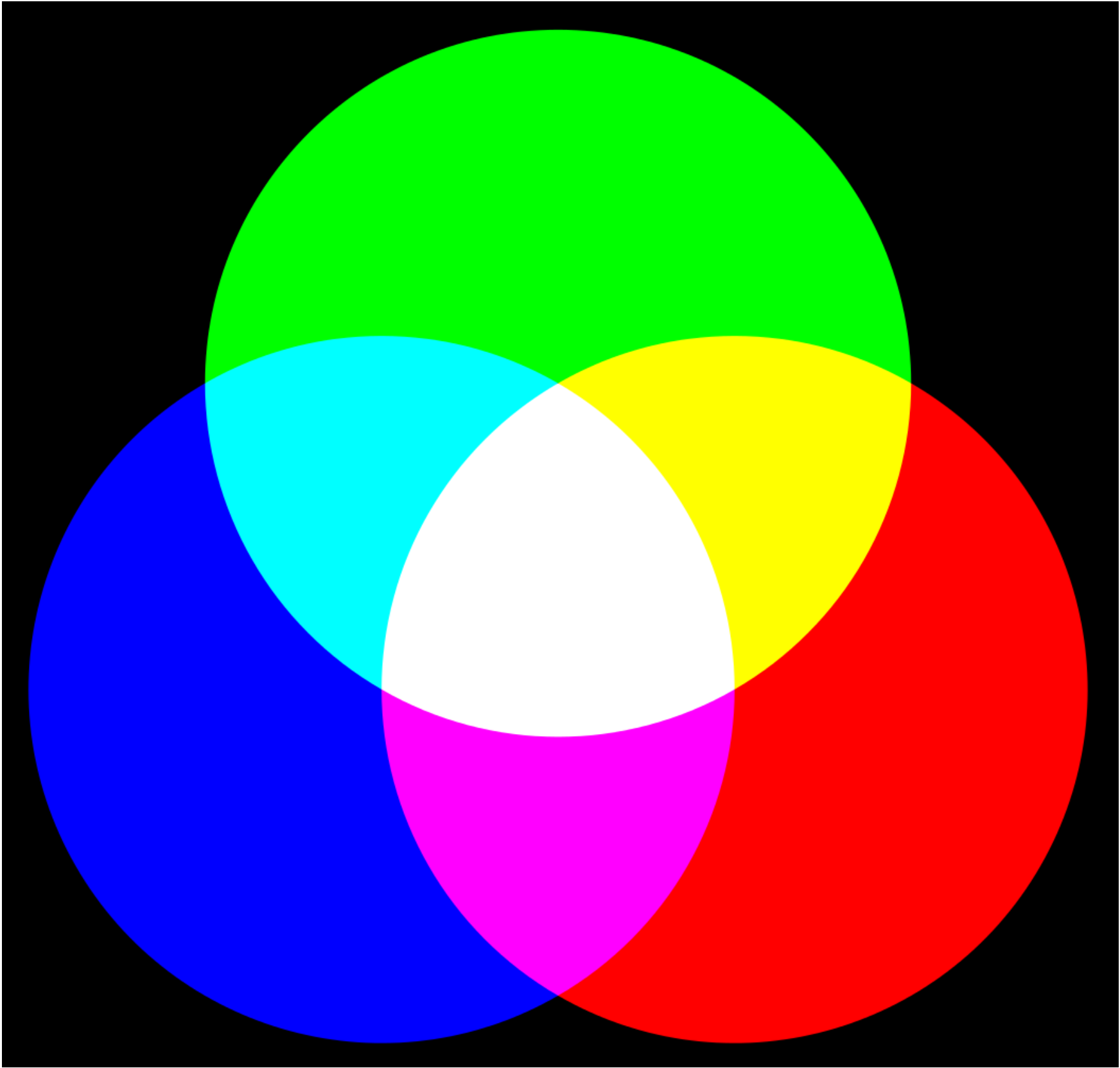
[illegible]

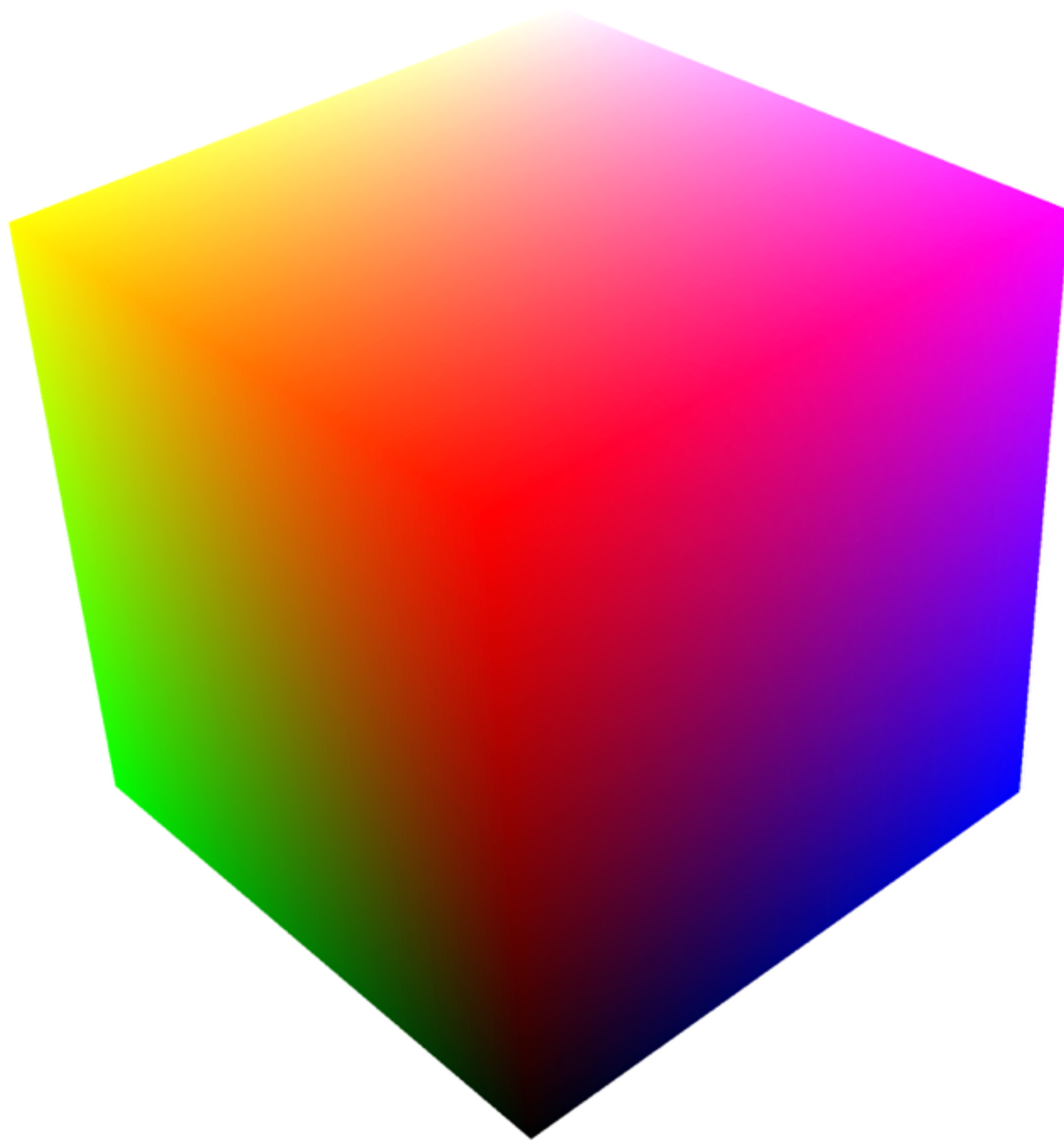
There's a *lot*
more to see!

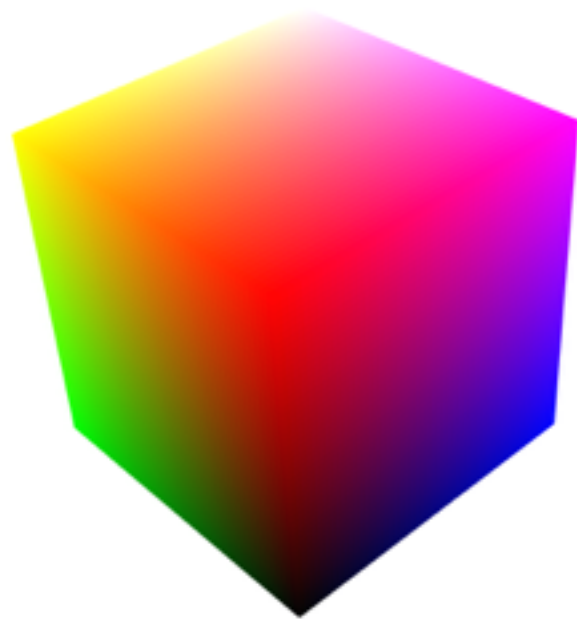
© www.ibedron.com 2009-2-10

What is Color? What is Light?

Perception - Human and Otherwise







(t, x, y, r, g, b)



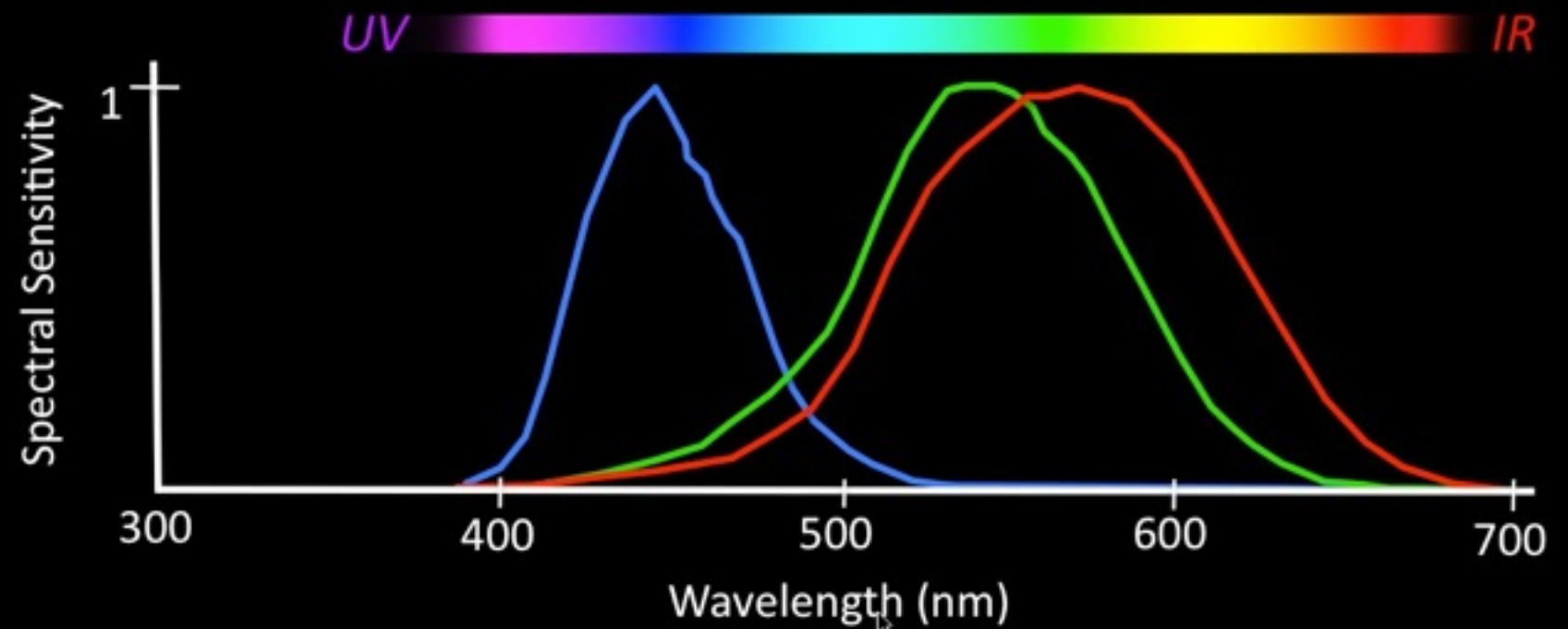
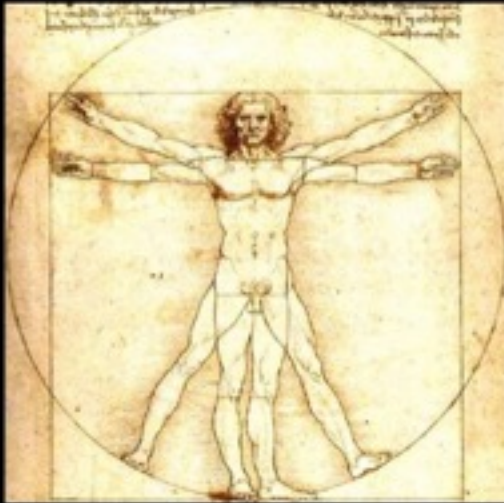
this just shows the color aspect; dogs
also have worse spatial resolution

what you see

what Fido sees

Mantis Shrimp: Extraordinary Eyes

Homo sapiens



Neogonodactylus oestedii

